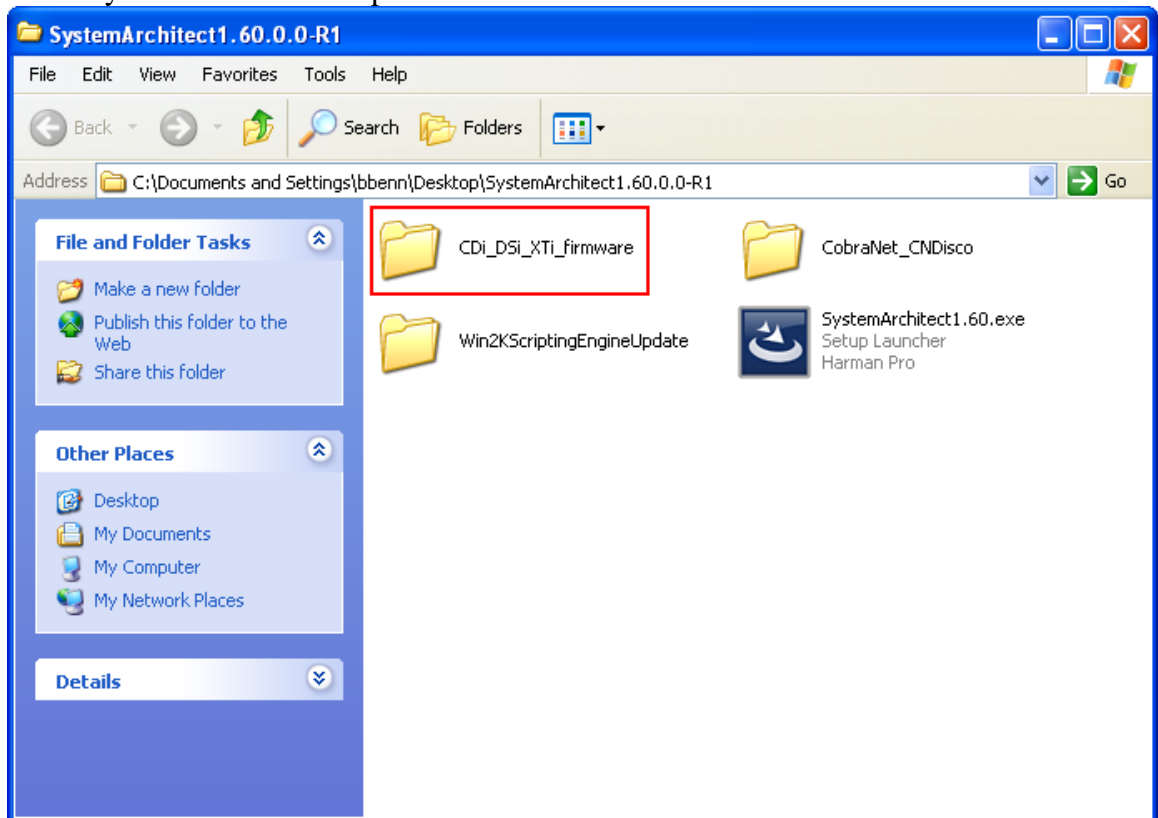


## **CDi, DSi, and XTi Firmware upgrade instructions**

**Important:** Any Crown CDi Series, DSi Series, and XTi Series amplifier manufactured before September 19, 2006 or having a serial number lower than 800129400 will require a firmware update. For amplifiers built after this date, the firmware has already been loaded at the factory. The amplifier will communicate with System Architect without any need for any update. The manufacture date and serial number can be found on the rear of the unit.

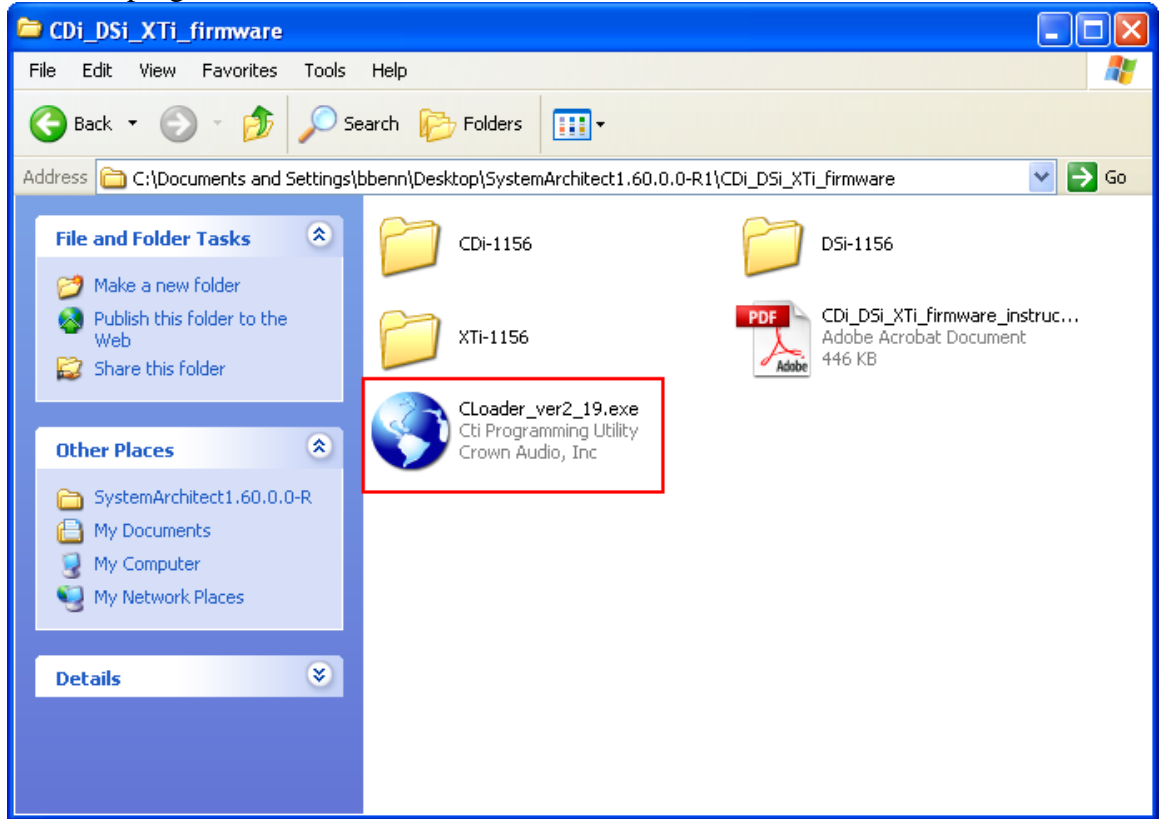
Note: Firmware upgrade **must** be done one amplifier at a time using this method. Also, System Architect **must** be closed before updating the firmware through this process..

- 1) Copy the CDi\_DSi\_XTi\_firmware folder to your desktop, this folder is included in the System Architect compressed file.

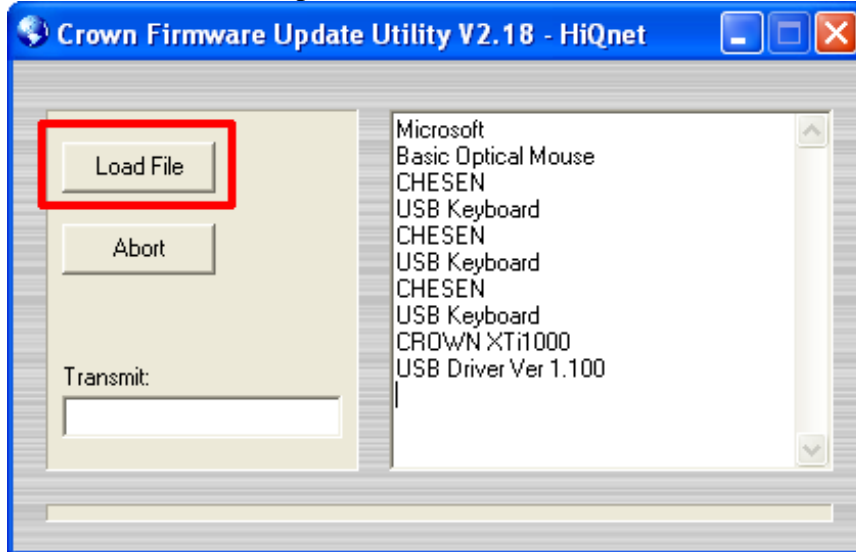


- 2) Connect the USB cable to the amplifier and the computer.
- 3) If the amplifier is not turned on, turn it on.

- 4) After the Windows New Device acknowledgement alert appears open the CLoader program in the folder.



- 5) Select “Load File” and navigate to the location where the .s firmware file is located for the amplifier.
  - CD11156.s for CDi amplifiers
  - DS11156.s for DSi amplifiers
  - XT11156.s for XTi amplifiers



**Note:** All models of amplifier will display as an XTi1000. All the CDi, XTi, and DSi amplifier use the same USB driver, so CLoader does not distinguish between them. Also your exact screen may vary depending on what is attached to your computer.

- 6) Select the file and then “Open”.
- 7) The amp front display panel will be displaying “--Wait--” and the channel 1 and channel 2 lights will be alternately flashing.
- 8) “Reboot” will be displayed next on the front of the amp and then it will display “DSP OFF” when completed.
- 9) After the amplifier reboots, the program will verify it has a valid serial number. If it does not, then it will assign one.
- 10) Perform steps 1 through 9 for each amplifier one at a time.
- 11) Close the CLoader program.

**Note:** Once firmware version 1.1.1.10 or higher is installed in the device(s) the CLoader program will no longer be needed as all further installs can be done through the System Architect program.

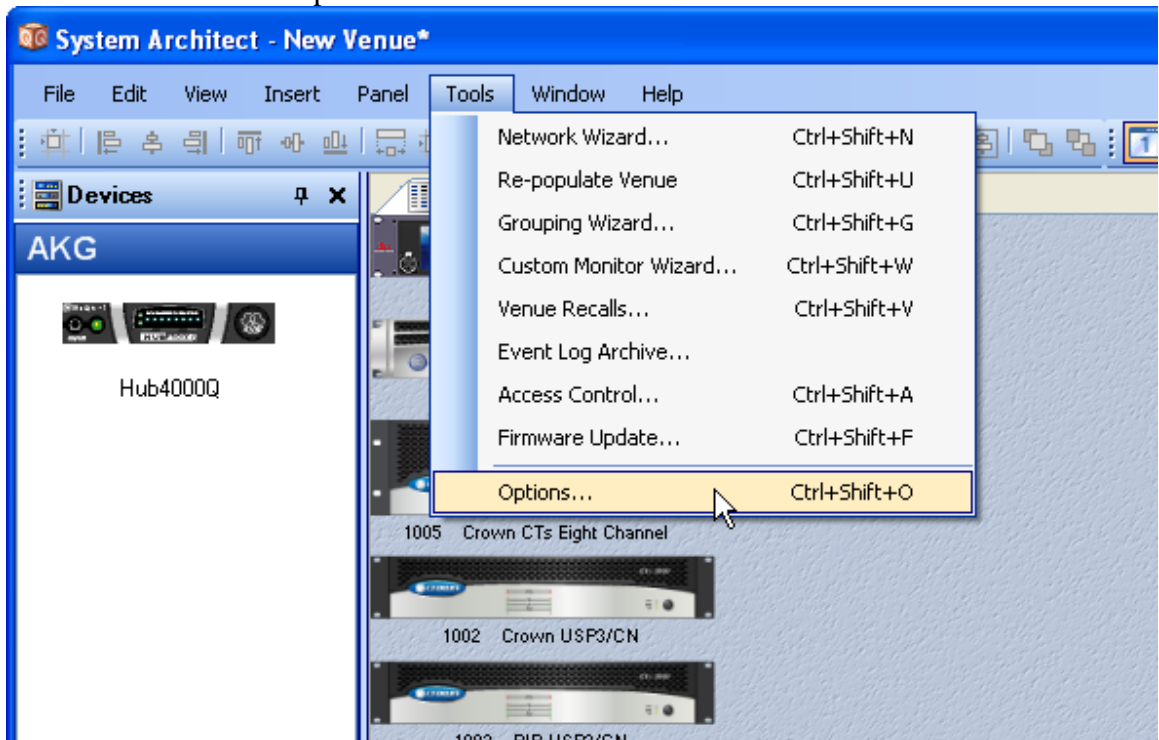
## Configuring System Architect for USB Communication

System Architect by default is configured for USB communication. If you have made changes to the System Architect setup for USB you will need to perform the following steps

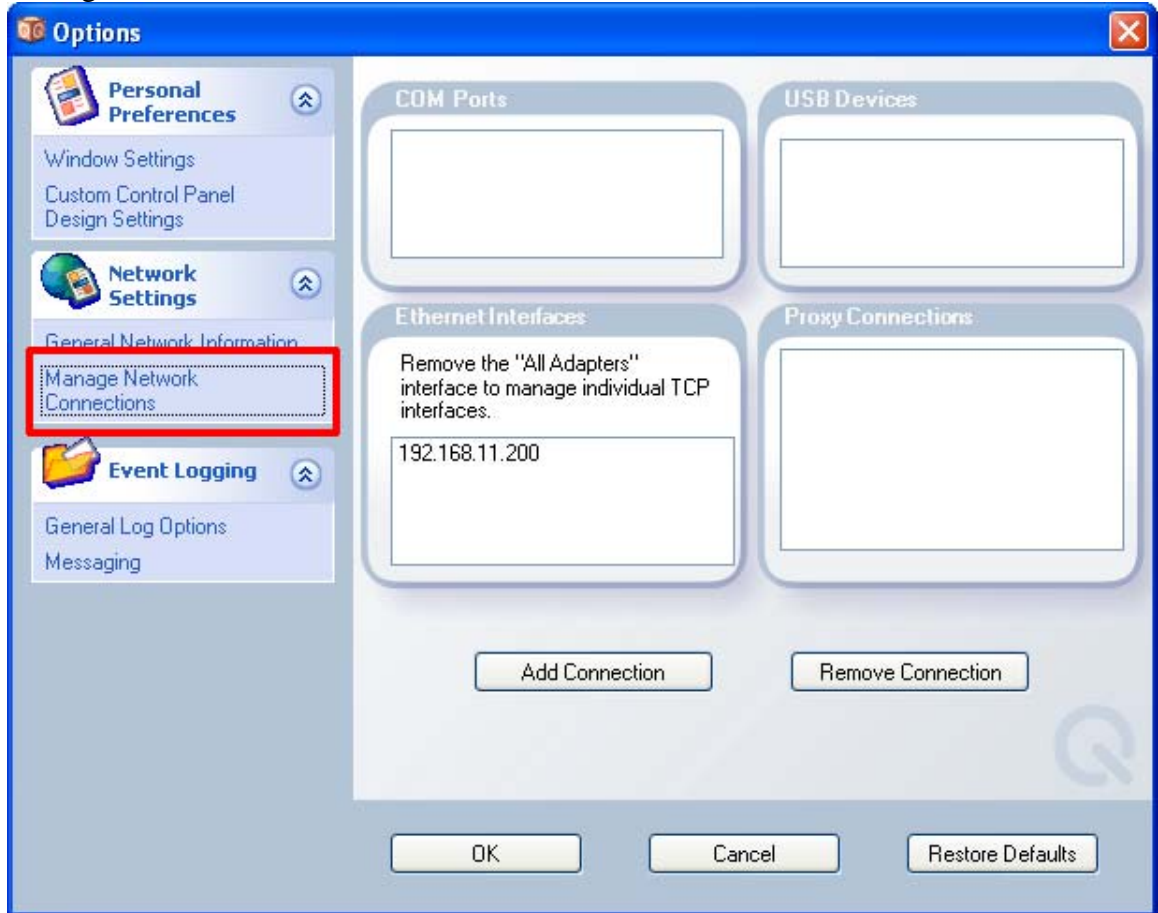
- 1) Start System Architect. In the lower left corner of System Architect will be a white button that should say “Network Active”. If it says “Network Inactive” than left click on it once to activate.



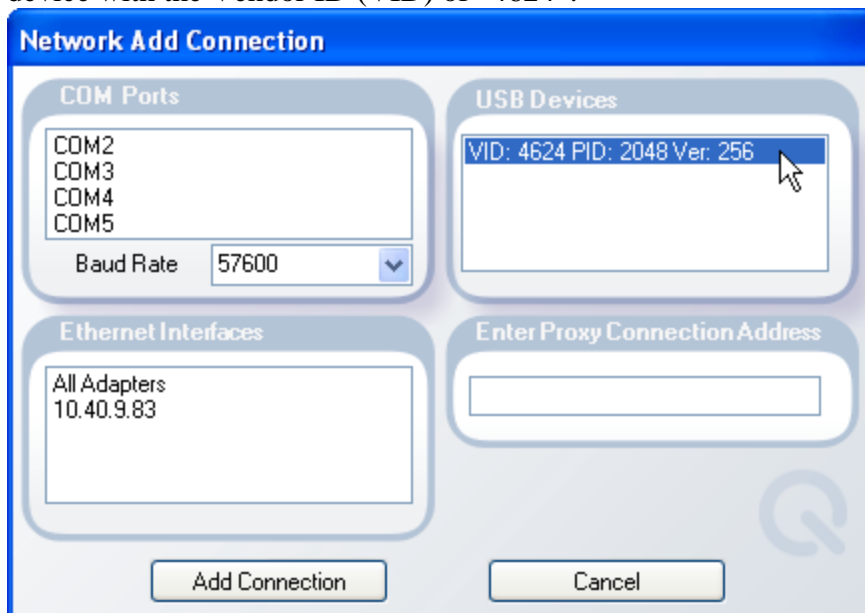
- 2) In a few seconds the amp should appear in the “Venue View Panel. If it does not appear you may need to adjust the network settings. The directions for this task are after this section.
- 3) Select Tools from the Options menu.



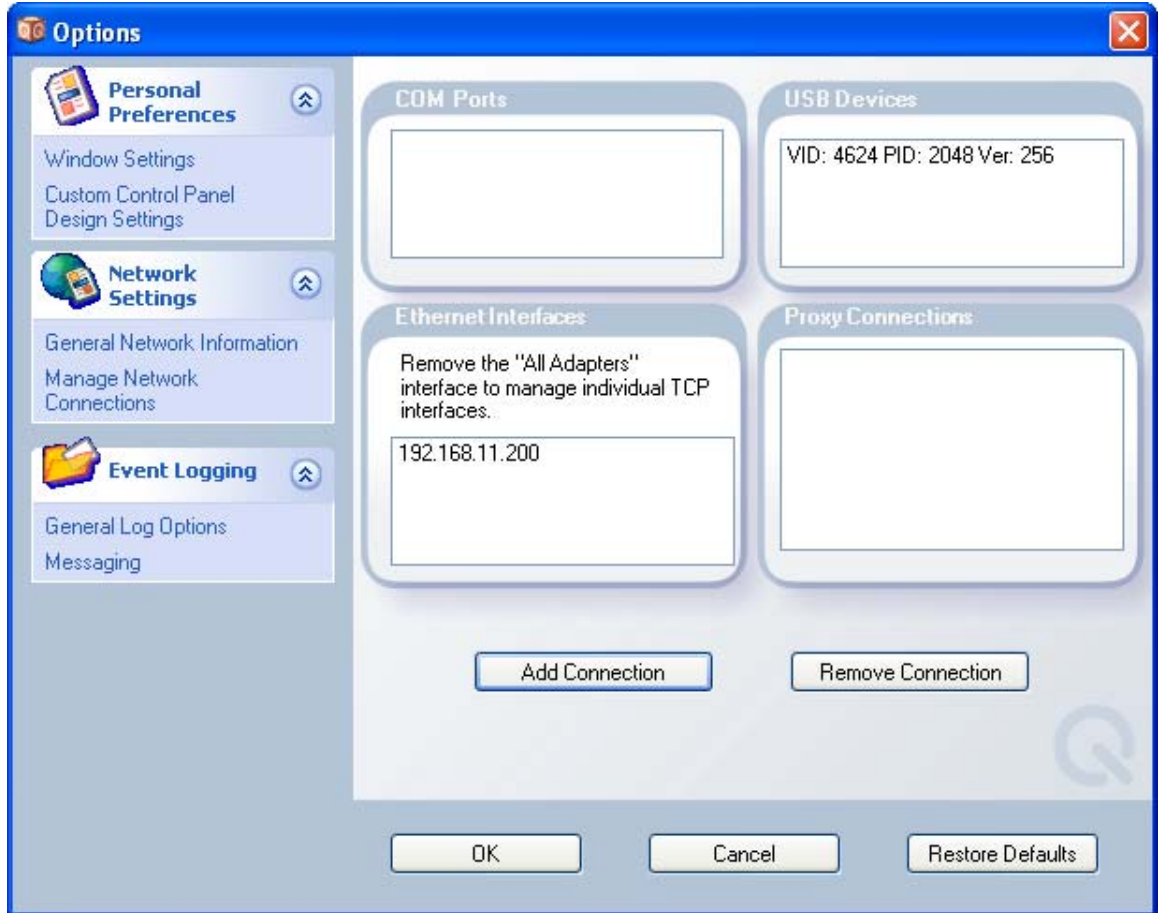
- 4) In the “Options” window select “Manage Network Connections” from “Network Settings”



- 5) Select “Add Connections”
- 6) In the “Network and Connections” window under “USB Devices” select the device with the Vendor ID (VID) of “4624”.



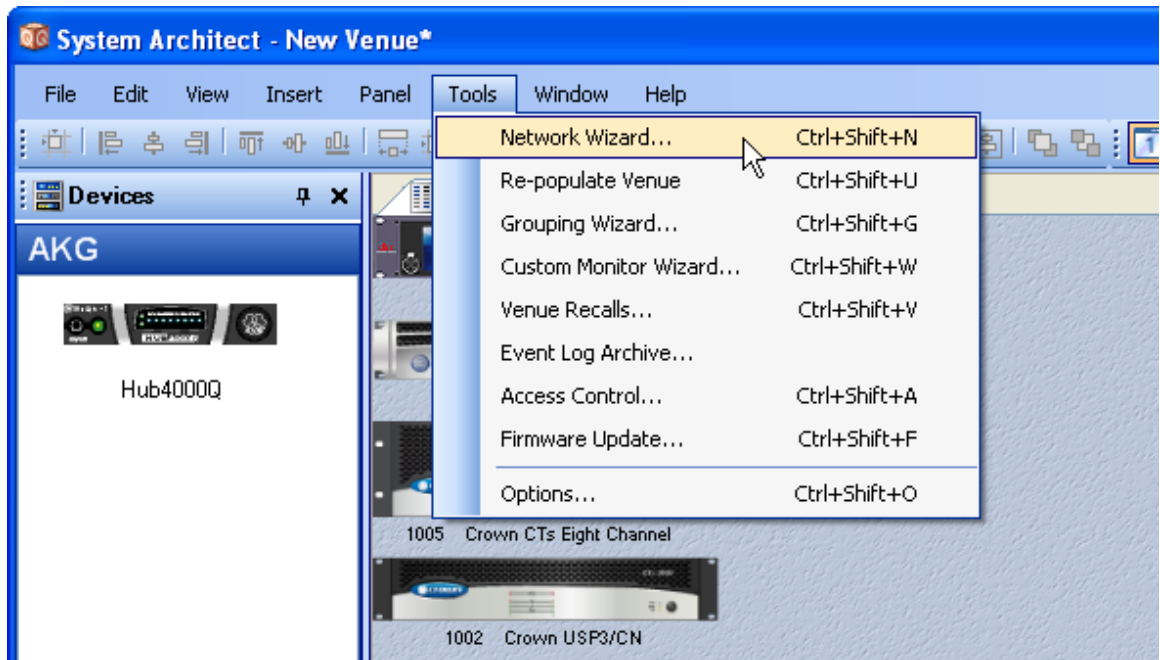
- 7) Select the “Add Connections” Button.
- 8) The new VID should be listed in the “USB Devices” window.



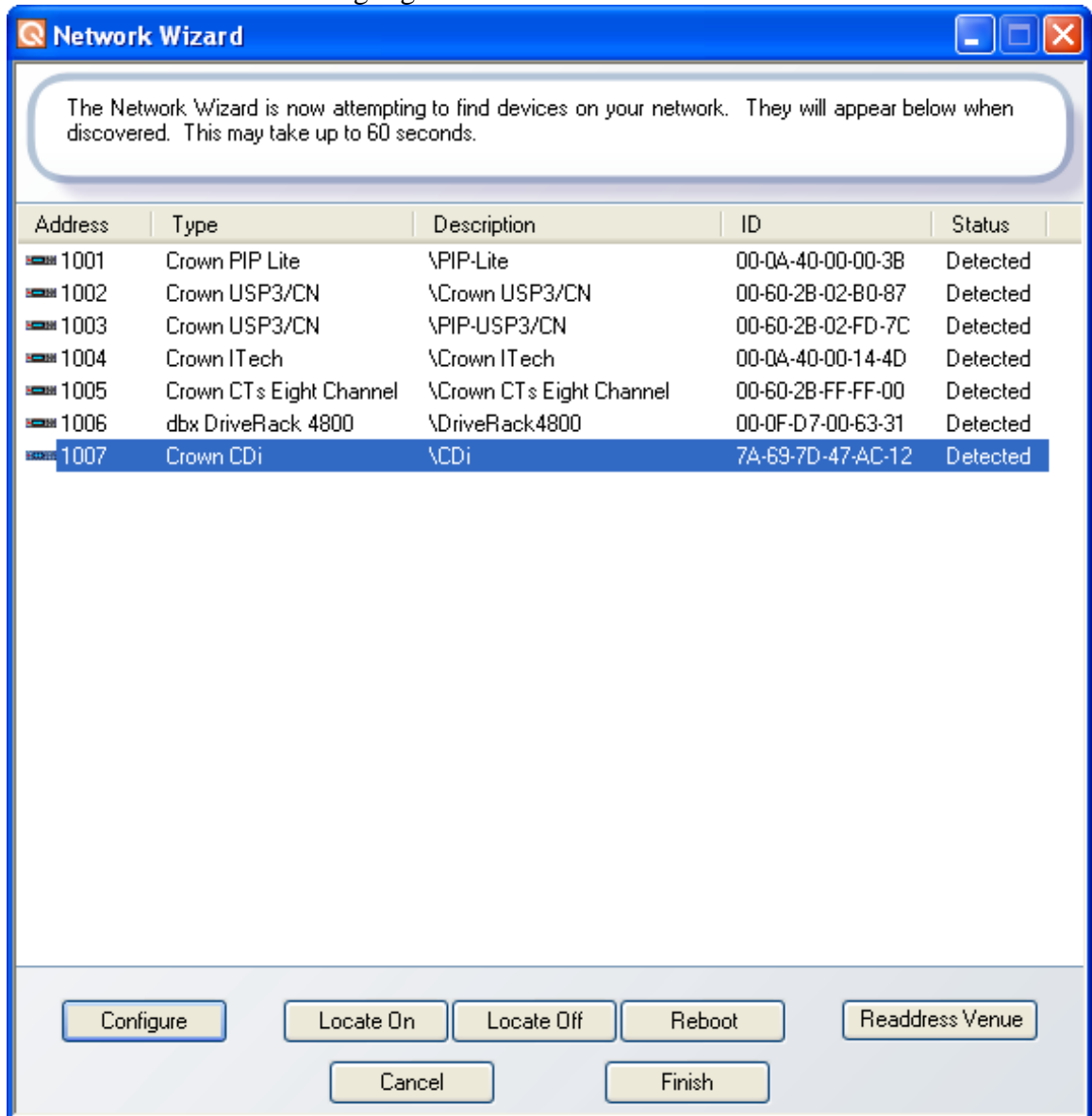
## **Device Addressing:**

Each device will need to have its own unique HiQnet address; the same address can not be used more than once. An address must be below 60,000 currently. When launching System Architect, if there are conflicting addresses an alert will appear warning of duplicate addresses. The CDi, DSi, and XTi amplifiers do not support sequential addressing currently, they do support random addressing.

- 1) Launch System Architect if it is not already running.
- 2) Connect an amplifier to the computer via the USB port.
- 3) After the device appears in the “Venue View” select Network Wizard from the Tools menu.



- 4) Left click on the device to highlight it.



- 5) Select the “Configure” button. If you are not sure which amplifier you have selected, pressing the Locate On button will cause the front panel display to blink. Press Locate off to turn off the locate feature.

- 6) In the “Configure Node” window give the amplifier a HiQnet address that is different than any other device in the network.

The image shows a "Configure Node" dialog box with two main sections: "General" and "Ethernet".

- General:** Displays "Configuring Device 7A-69-7D-47-AC-12". Below this is an "Address" input field containing the number "1007". To the right of the input field is a checkbox labeled "Readdress Automatically", which is currently unchecked.
- Ethernet:** Features a "MAC Address" dropdown menu. Below it are three input fields for "IP Address", "Subnet Mask", and "Default Gateway", each with a small grid of input boxes and a period separator. At the bottom of this section is a checkbox labeled "Use DHCP", which is also unchecked.

At the bottom of the dialog box are two buttons: "OK" and "Cancel".

- 7) In a few seconds the device will appear in the “Network Wizard” with its new address.
- 8) Repeat steps 4 through 6 as necessary
- 9) Select the “Finish” button.
- 10) The amplifier should be now seen in the Venue View with its new address.